

Accessing Meditech through VPN

Click on St Francis Hospital icon (or type in web site www.stfrancishospital.com)



Saint Francis
Hospital

Click on **Log in with Secure ID** (If you type in web site you must first <click> **Employee area** then <click> **Login with your Secure ID**)

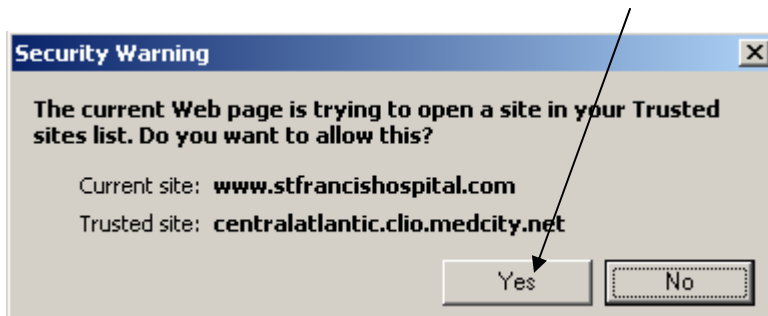
Employee Area

Online VPN Connection

To access the online VPN Connection you must first have an active SecureID, know your 3-4 ID, and PIN number. After entering this information into the username and password field on the login page you will then connect to the network. If this is your first time logging into to the online VPN then you will be prompted to install the utility. If you receive dialog boxes asking to install or the yellow bar at the top of your internet page, please allow it to install. If you are ready to connect please click the link below.

[Login with your SecureID *](#)

You may see a Security Warning Screen click “**Yes**”



Enter Username and Password

HCA Central Atlantic Division Remote G

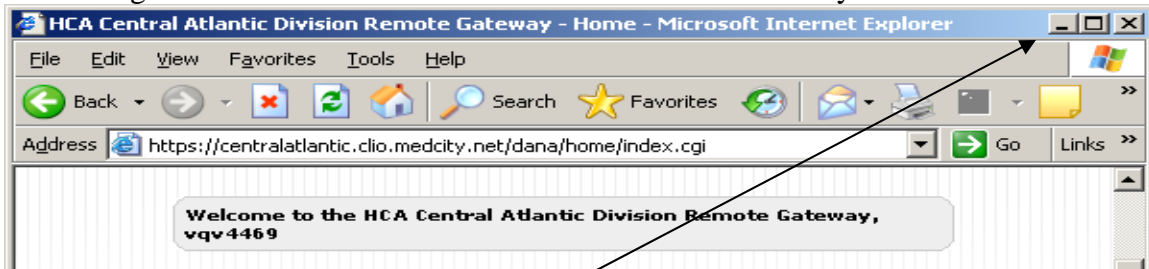
Username

Password

You are about to access an HCA - Information Technology & Services, Inc. (IT&S) computer system. This system is to be used only by authorized users of IT&S, its customer and affiliates. As a user of this system, you agree to the expectation of privacy rights or ownership of this system.

Your Username is the 3-4 ID assigned to you by St. Francis
Your Password is your Pin # (assigned by St. Francis) + your Token #

You then get the HCA Central Atlantic Division Remote Gateway screen



Click on the minus sign top right hand corner to place screen at bottom of desktop
You will also see gold lock in bottom right hand corner of screen

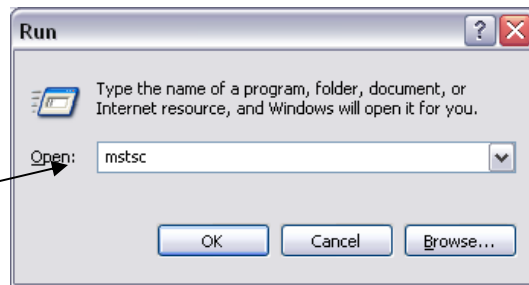
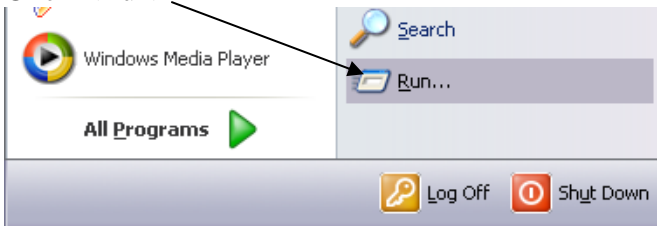


As long as you are logged on to this remote site you can not access anything else by internet (gold lock will show as locked)

To access your computer remotely

Click <Start>

Click <Run>



Type in "mstsc" (do not use quotations)

Type in name of computer (located in lower right hand corner of screen
ie: STFHNISDIR) that you want to remote into.

Reminder this computer must be turned on.



To access Meditech

Click on <Meditech> icon on your desktop



Enter User ID (which is same as your VPN Username)



Enter Password (STARTME123) this will be a one time password and you will be asked to change it – you must enter at least a 7 character alpha-numerical password

When you have finished using Meditech you need to **go to the gold lock - right click -> choose sign out**, then **close the HCA Central Atlantic Division screen**)



If you have any questions or cannot access either the VPN, Meditech or your desktop remotely, please call the IS Help Desk at 347-6682.